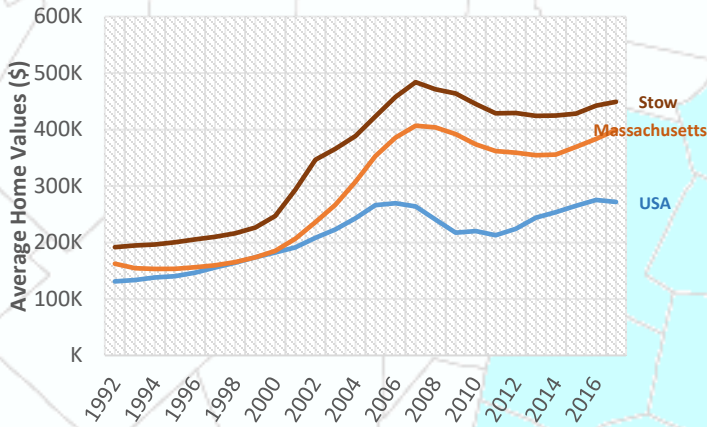
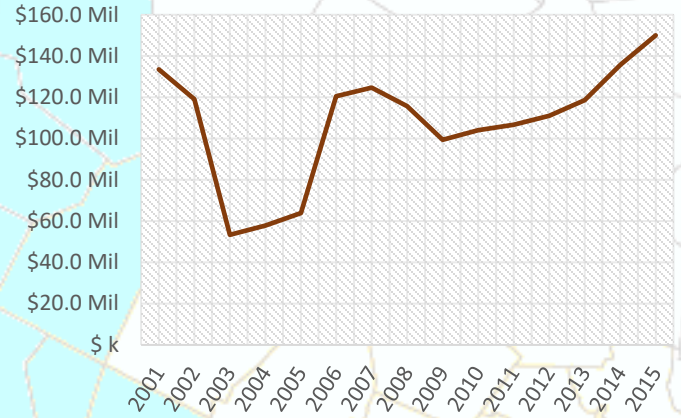


### Rising Home Values



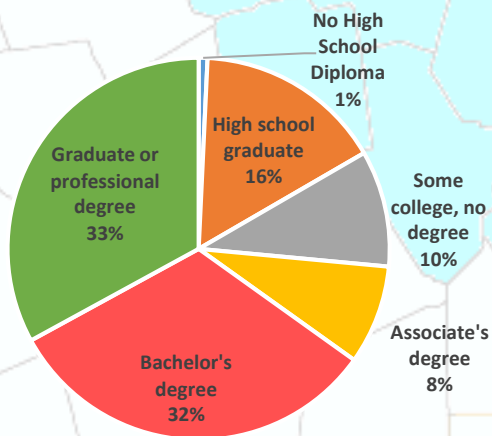
Beyond the year to year averages, in 2016, the median single family home in Stow sold for \$442,300<sup>1</sup>. This is higher than the state median sale price for 2016 which was \$345,000<sup>1</sup> and the national median for that year which was \$232,067<sup>2</sup>.

### Increasing Payroll



From Q2 2015 to Q2 2016, the payroll for all places of employment in Stow was \$142,844,860.<sup>3</sup> As the town has recovered from the recession the payroll has increased steadily in the last few years.

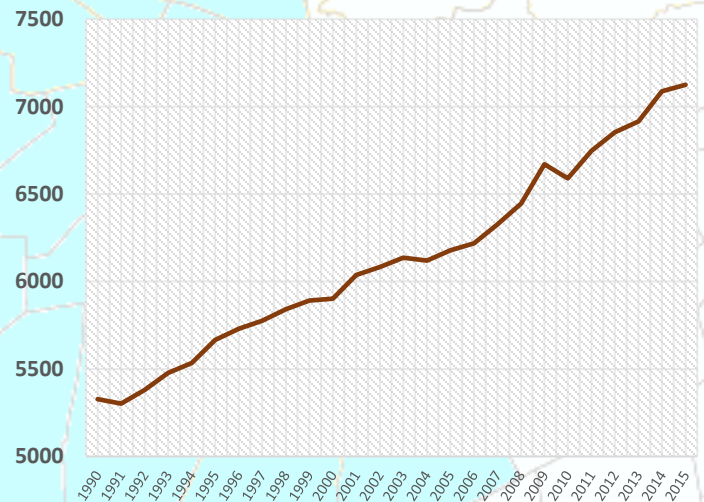
### Highly Educated



2011-2015 ACS (U.S. Census Bureau)

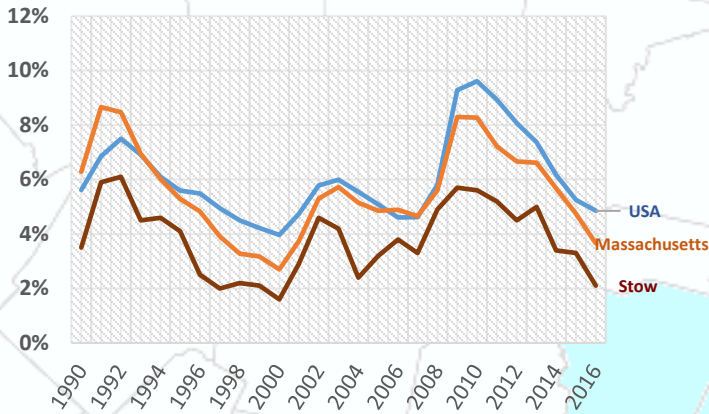
Stow has a highly educated population compared to the state and to the nation with 65% of residents having a bachelor's degree or higher. During the same time 40.5% of people in Massachusetts had a bachelor's degree or higher, while only 29.8% of all people in the U.S. had one.<sup>4</sup>

### Growing Population

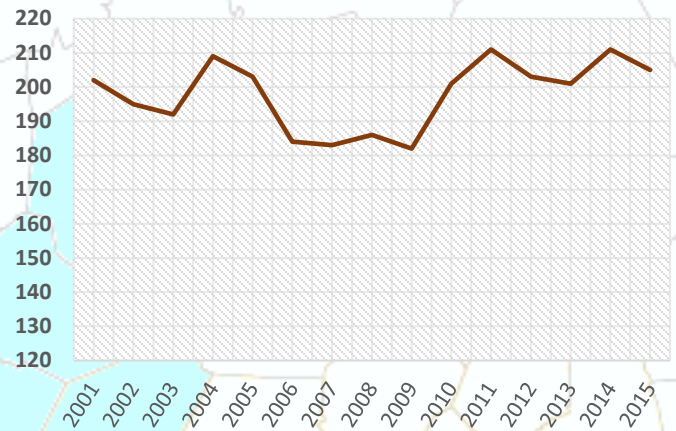


The population of Stow has been increasing steadily. In 2000, the population of Stow was 5,902 this increased to 6,590 by 2010, and in 2015, the population of Stow was estimated to be approximately 7,125.<sup>5</sup>

## Low Unemployment



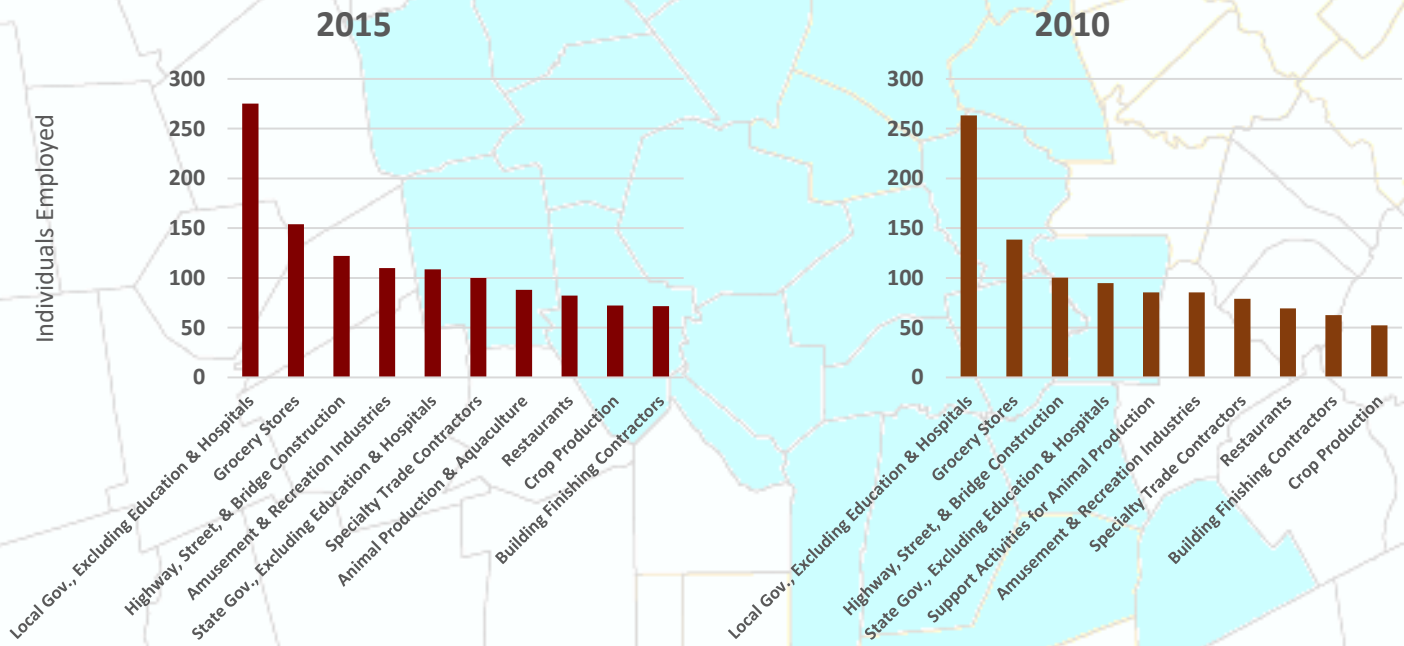
## Employers



Beyond the year to year averages, in February 2017, the unemployment rate in Stow was 3.3%. This is slightly lower than the state and 495/MetroWest regional unemployment rates, which were both 3.4%, and much lower than the national unemployment rate of 4.8%<sup>3</sup>

After a drop from 2006 to 2009, the number of employers in Stow has not increased or decreased significantly since around 2010. In 2001, there were 202 employers in the town, and by Q2 2016 this number had increased to 205.<sup>3</sup>

## Top Ten Industries In Stow



**Top Ten Industries data** and analysis conducted by the Public Policy Center at UMass Dartmouth for the 495/MetroWest Partnership in support of the 495/MW Suburban Edge Community Commission utilizing 2014 US Census Bureau Local Employment Dynamics. For more information on these data sets please visit <http://lehd.ces.census.gov/>

### Sources:

- Mass.gov Municipal Databank <http://www.mass.gov/dor/local-officials/municipal-databank-and-local-aid-unit/databank-reports-new.html> (Line graph municipal data)  
 1. The Warren Group <http://www.twgstats.com/tssub/start.asp> 2. Ycharts Average US Home Values [https://ycharts.com/indicators/sales\\_price\\_of\\_existing\\_homes](https://ycharts.com/indicators/sales_price_of_existing_homes)  
 3. Mass.gov Labor and Workforce Development <http://www.mass.gov/lwd/economic-data/> 4. US Census Bureau <https://www.census.gov/> 5. UMASS Donahue Institute <http://www.donahue.umassp.edu/news-events/institute-news/new-population-estimates-for-mass-released-interactive-map-available>